

## Weather Forecasts Are Favourable For Dollar Spot



For areas south of Sydney to Melbourne,

the projected weather forecasts for the next few weeks are favourable for Dollar Spot. Dollar Spot is a chronic disease of cool season golf course turf when conditions are favourable. Practices that help reduce the severity of Dollar Spot include having adequate levels of nitrogen. In addition, dew removal in the morning can help reduce the infection period for the pathogen (*Sclerotinia homoeocarpa*). Dew removal is accomplished through various practices including dragging, poling or turning the irrigation system on briefly to knock the dew off.

## Anthracnose Is A Concern On Closely Mowed Cool Season Putting Greens



Anthracnose is a destructive disease of annual bluegrass and to a lesser extent creeping bentgrass. The pathogen, *Colletotrichum graminicola*, spends most of its time

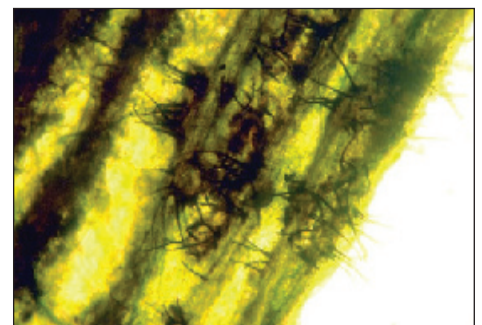
as a saprophyte, primarily in the thatch. However, with the arrival of high temperatures and humidity, this fungus becomes pathogenic, infecting leaf, stem or root tissue. The disease is most prevalent on shortly mowed greens but can occur at higher heights of cut found on fairways.

Anthracnose initially appears as small patches of yellow to reddish-brown turf 2 to 5 cm in diameter. These patches can progress into relatively large irregularly shaped areas. When the plants are weakened by environmental or mechanical stress, *Colletotrichum graminicola* can attack the stem and basal region of the plant. If the infection is severe enough, the plants are easily pulled from the turf. As the infection progresses, the pathogen will produce small black protrusions immediately below the leaf epidermis. These smooth protrusions represent the early stage of the reproductive structure called the

acervuli. As the acervuli matures spines (called setae) are produced.

Cultural practices that help reduce the severity of Anthracnose include maintaining adequate levels of nitrogen, raising mowing height (also switch to solid rollers), and preventing wilt or drought stress. In addition, try to minimize wounding of the plant. Moderate to heavy topdressing, aggressive verticutting can also contribute to predisposing the plant to anthracnose.

*Photograph of acervuli clustered on a leaf blade. The presence of acervuli is a diagnostic key for this disease.*



### Questions?

If you have questions about the Syngenta TechNotes—SH contact Peter Sullivan at [peter.sullivan@syngenta.com](mailto:peter.sullivan@syngenta.com), your local Nuturf representative or visit [www.greencast.com.au](http://www.greencast.com.au)