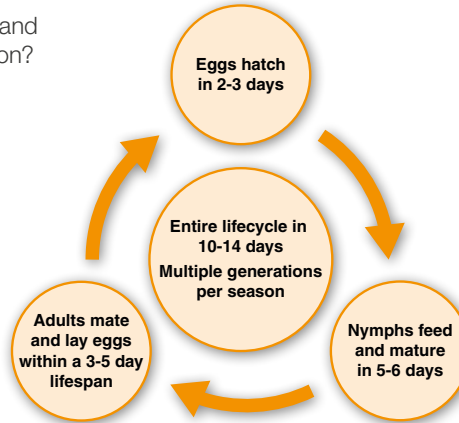


Couch Mite Control Redefined



Have you ever wondered why Couchgrass Mite is hard to control and why you just never seem to get 100% back from a severe infestation? It is a compounding effect:

- Couchgrass Mite has a very short lifecycle (10-14 days) and multiple generations per season
- Couchgrass Mite is "physically difficult to get to" as it lives in tight spaces between leaf sheaths
- Couchgrass Mite cripples turf recovery with toxins injected during feeding
- Physical damage (witches broom) is irreversible
- Recently Couchgrass Mite has been targeted with a single chemistry approach at spray intervals twice the length of its lifecycle
- Single chemistry overuse often leads to tolerance or ultimately resistance development



Syngenta Approach to Effective Mite Management

Effective management of Couchgrass Mite in your turf areas needs to overcome these compounding effects, by effectively controlling multiple lifecycles and affording turf the opportunity to recover.

AGADOR and HIGRAN work together to accomplish exactly that.

- Multiple chemistries ensure consistent control and minimise resistance development
- Spray application windows cover multiple lifecycles
- Specific recommendations ensure proper application placement in between leaf sheaths
- Physical removal of damaged plant material allows real turf quality improvements

AGADOR delivers the initial knockout punch by:

- Having an effective rate for quick knockdown of population numbers (1 to 2 L/ha)
- Effectively controlling 1 generation or lifecycle (10-12 day residual)
- Using a non-ionic surfactant to ensure penetration of the abamectin in between leaf sheaths to contact mites

A difficult pest to control

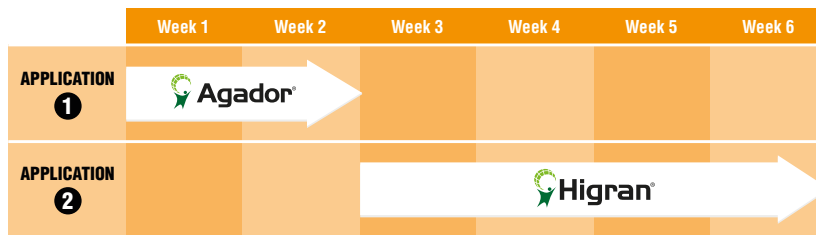


Effective program for sustained control

HIGRAN delivers the follow-up residual protection by:

- Having a stable active ingredient that is translaminar to accomplish long lasting control of up to 3 generations or lifecycles (3-4 week residual)
- Using a non-ionic surfactant to ensure penetration of the diafenthiuron in between leaf sheaths for optimal plant uptake

To the right is an approach that our research in Australia (over the past 5 years) has proven to be most effective against Couchgrass Mite. Make a start at the very first signs of mite activity or when flushing indicates the presence of mites, to ensure minimum physical damage needs to be repaired.



For more information call the Syngenta Technical Product Advice Line on 1800 067 108 or visit www.greencast.com.au

Syngenta Australia Pty Ltd, Level 1, 2-4 Lyonpark Road, Macquarie Park NSW 2113. ABN 33 002 933 717.
 ®Registered trademark of a Syngenta Group Company. ™ Trademark of a Syngenta Group Company.
 All products written in uppercase are registered trademarks of a Syngenta Group Company. © 2018 Syngenta. SB18-193